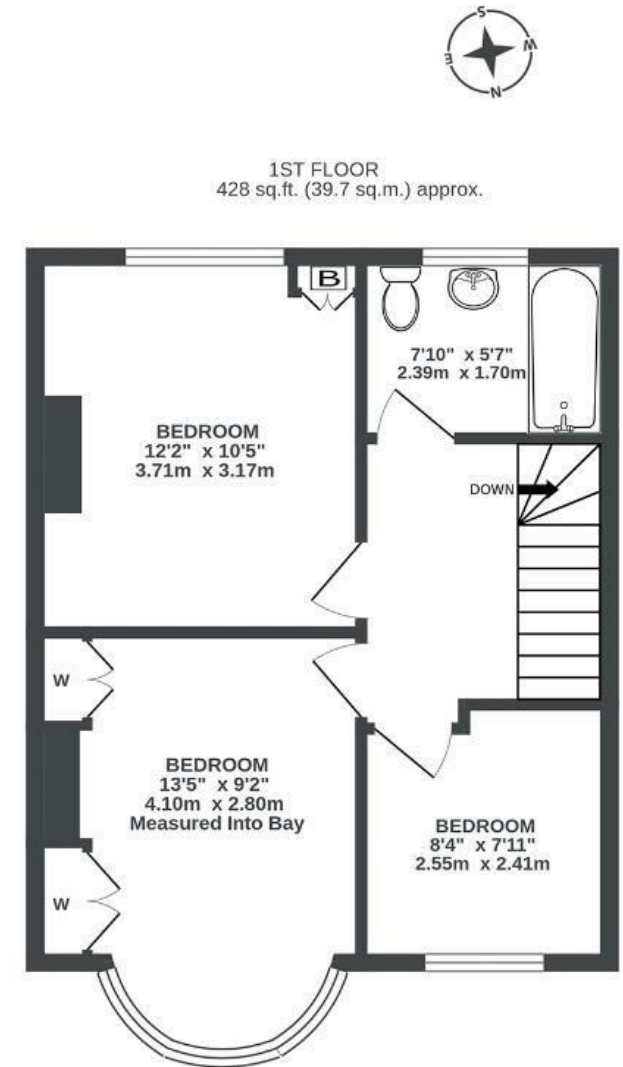
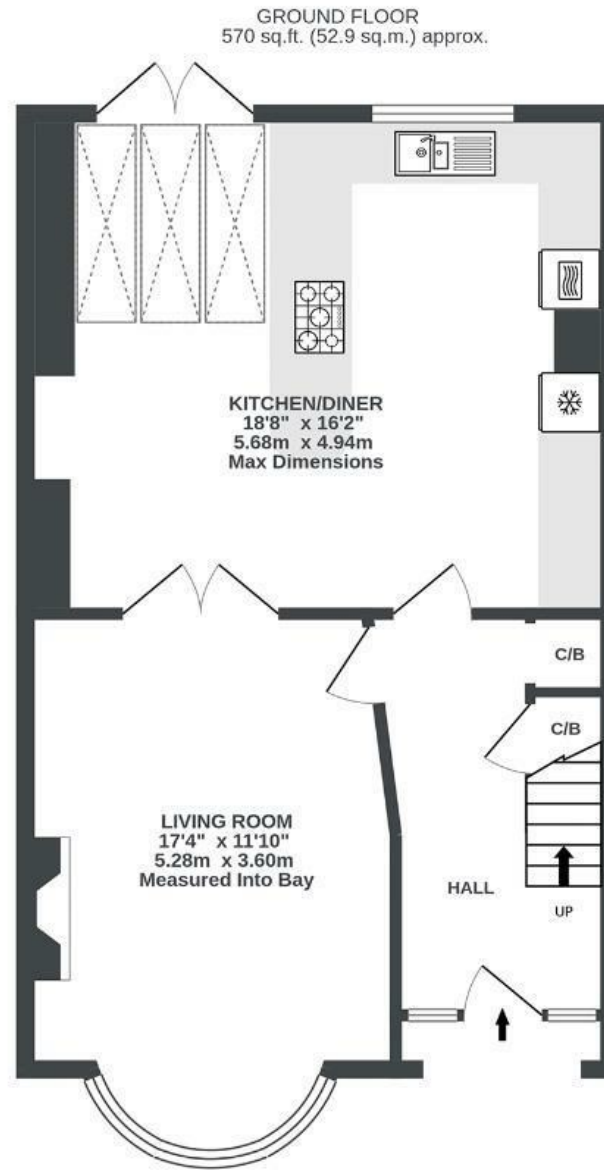


# Kings Head Lane

BEDMINSTER DOWN

APPROXIMATE FLOOR AREA  
92.6 SQM / 997 SQFT



Illustrations are for reference purposes only, measurements are approximate, not to scale.

Boardwalk

# Kings Head Lane

, BRISTOL



£375,000



3 Bedrooms



BS13 7BN



1 Bathrooms

*"I love sitting in my garden in the evening until the sun goes down, it's so peaceful."*

